

abbotFox

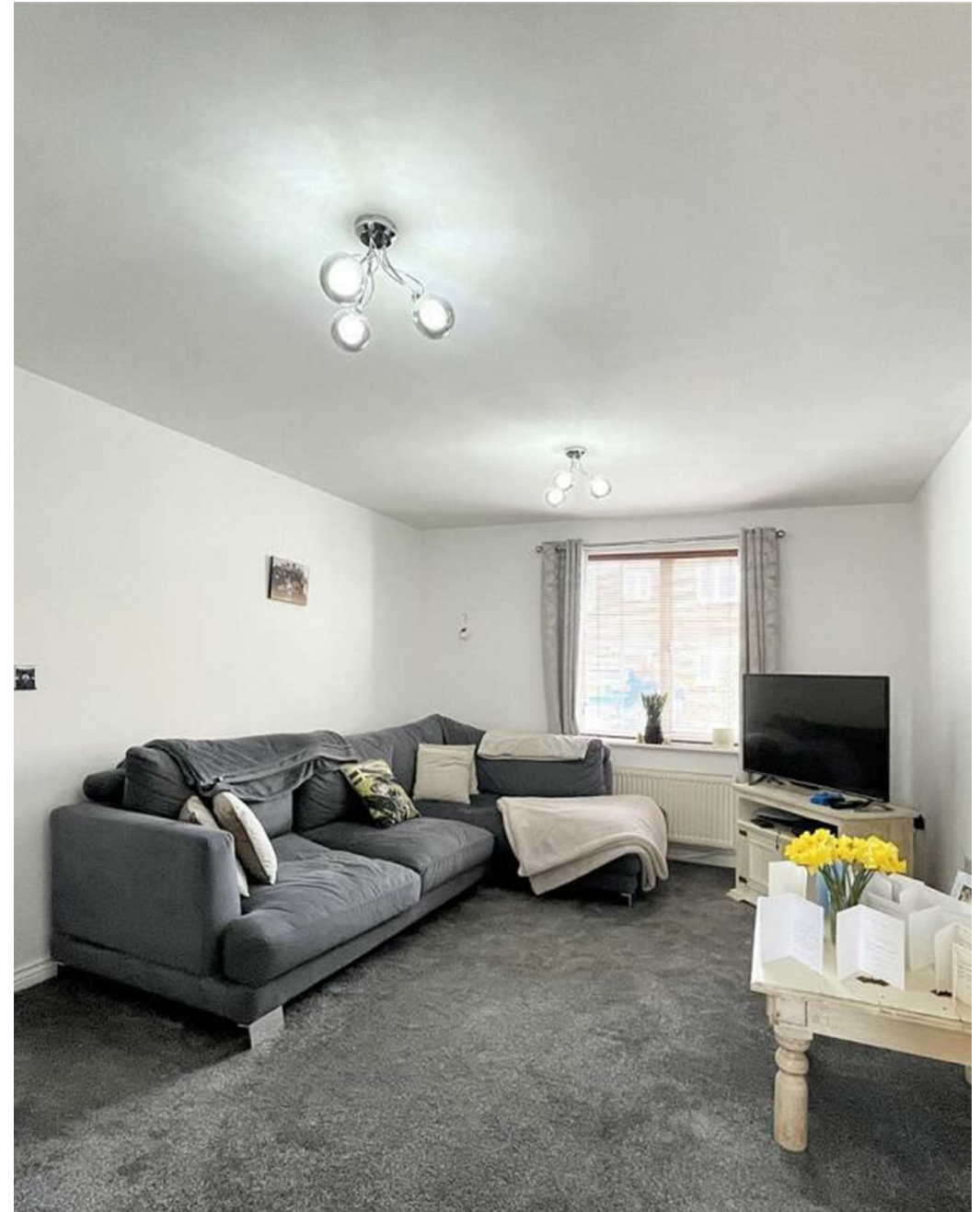


Little Plumstead, Norwich
Guide £315,000

“

We are a team of genuine individuals who hold a deep passion for both property and marketing. Collectively, we bring over 70 years of experience in the property market of Norfolk and Suffolk. Our affection for both counties runs deep, and we are enthusiastic about sharing our passion with you.

Colin McKenzie | **Branch Partner**







THE DETAIL_____

abbotFox presents this spacious, four bedroom family home, situated within a quiet spot, in the popular village of Little Plumstead.

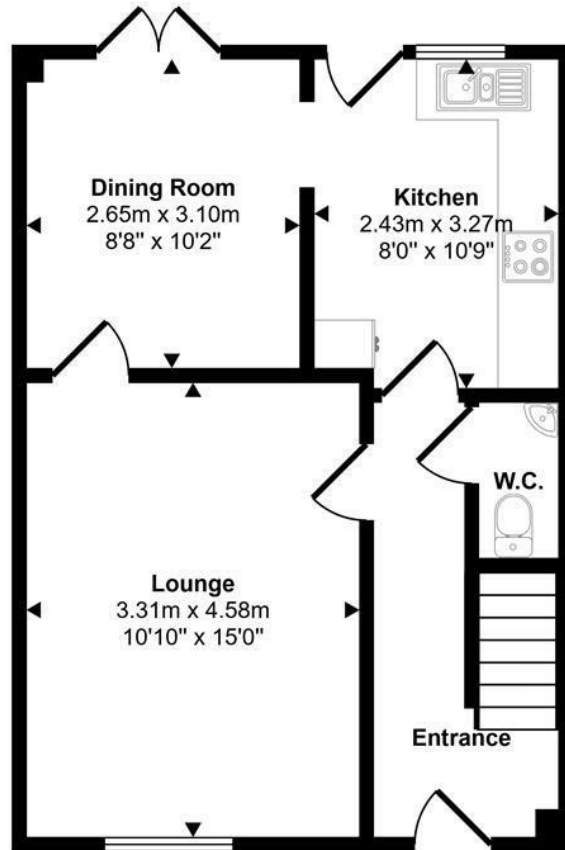
With accommodation over three floors, this home represents an excellent opportunity for any growing family. The ground floor comprises; entrance hall, cloakroom, lounge, dining room and kitchen. The first floor offers the principal bedroom with en-suite shower room, double bedroom and a family bathroom off landing. The top floor offers two further double bedrooms and an additional shower room. Externally, the property provides an enclosed private rear garden and off road parking and a garage set to the rear.

Offered to the market with no onward chain, an internal viewing comes highly recommended to appreciate the space this home has to offer.

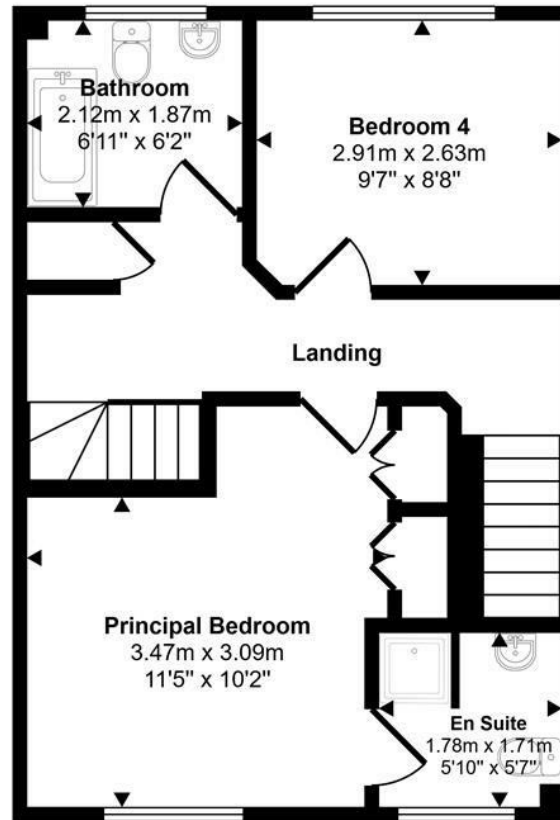


THE HIGHLIGHTS____

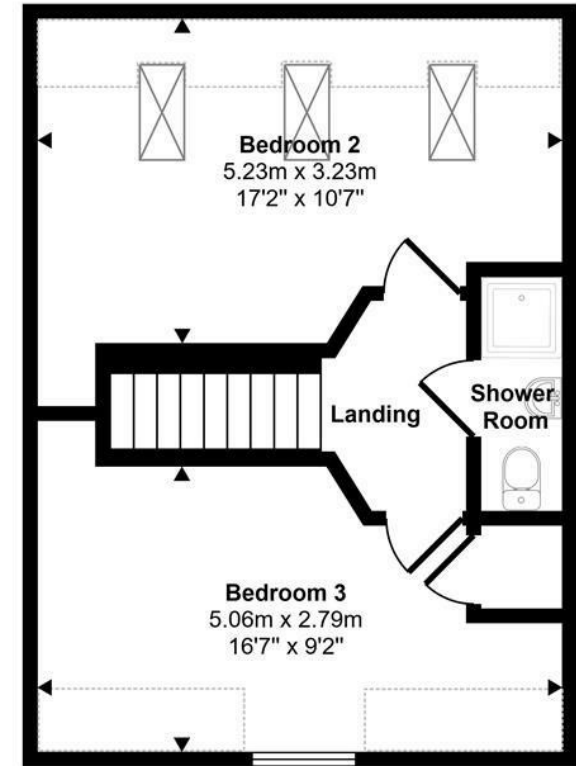
Approx Gross Internal Area
119 sq m / 1276 sq ft



Ground Floor
Approx 41 sq m / 444 sq ft



First Floor
Approx 41 sq m / 436 sq ft



Second Floor
Approx 37 sq m / 396 sq ft

Denotes head height below 1.5m

This floorplan is only for illustrative purposes and is not to scale. Measurements of rooms, doors, windows, and any items are approximate and no responsibility is taken for any error, omission or mis-statement. Icons of items such as bathroom suites are representations only and may not look like the real items. Made with Made Snappy 360.

Let's talk

01603 660000

sales@abbotfox.co.uk

@abbotfox

EPC RATING -

Disclaimer – In accordance with the Property Misdescriptions Act, the company abbotFox gives notice that all descriptions, references to condition, necessary permissions for use and other details are given in good faith and believed to be correct, but any purchaser should not rely on them as statements of fact, and must satisfy themselves by inspection or other means, as to their accuracy.